



Panel Computers

PANEL-PC

Industrial computers equipped with touchscreen LCDs, these systems are highly suited for use in operating and control panels. As with the BOX-PCs, components are selected for their high reliability and stable supply.

Product Lineup

You can choose from a wide variety of models based on application requirements including CPU speed, installation style and expandability.

PANEL-PCs

IPC-PT 620 series

B-03

CPU ULV Celeron 400MHz	FAN-LESS	Main Memory Max. 512MB SDRAM	Storage HDD SDD	×	OS Windows XP Embedded Windows 2000 Professional Windows NT Workstation 4.0
-------------------------------------	-----------------	---	------------------------------	---	---



15inch
TFT XGA
Card
Bus

IPC-PT/H620X(PCW)C



15inch
TFT XGA
Card
Bus PCI/ISA
× 2

IPC-PT/H620X(PCW)CP



12.1inch
TFT SVGA
Card
Bus

IPC-PT/L620S(PCW)C



12.1inch
TFT SVGA
Card
Bus PCI/ISA
× 2

IPC-PT/L620S(PCW)CP

IPC-PT 630 series

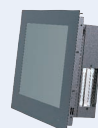
B-03

CPU LV Pentium III 800MHz	FAN-LESS	Main Memory Max. 512MB SDRAM	Storage HDD SDD	×	OS Windows XP Embedded Windows 2000 Professional Windows NT Workstation 4.0
--	-----------------	---	------------------------------	---	---



15inch
TFT XGA
Card
Bus

IPC-PT/H630X(PCI)C



15inch
TFT XGA
Card
Bus PCI
× 2

IPC-PT/H630X(PCI)CP



12.1inch
TFT SVGA
Card
Bus

IPC-PT/L630S(PCI)C



12.1inch
TFT SVGA
Card
Bus PCI
× 2

IPC-PT/L630S(PCI)CP

PANEL-PCs





Multiple Functions - Compact Body Touch Panel & All-in-one PC



IPC-PT 620 Series

Fanless Ultra Low Voltage Celeron 400MHz Panel PC 620 series

Dimensions on Page B-06

Ultra Low Voltage Celeron 400MHZ	Chip Set 815E	Main Memory Max. 512MB SDRAM	Fan-less	 15inch TFT	 15inch TFT	 12.1inch TFT	 12.1inch TFT
	PCMCIA (CardBus)	DVI (Includes VGA adapter)	LAN	Audio	■ PC Card slot x1 IPC-PT/H620X(PCW)C	■ PC Card slot x1, PCI/ISA Bus slot x2 IPC-PT/H620X(PCW)CP	■ PC Card slot x1 IPC-PT/L620S(PCW)C

* Contec cannot guarantee that a 2.5" HDD will operate normally when used on a 24-hour basis. This type of use will drastically reduce the service life of the drive. Contec recommends the use of a silicon disk drive (SDD) when operating on a 24-hour basis.

User's manual shipped on CD. Optional CD-ROM / DVD-ROM drives are available.
Manuals can be downloaded from our website. (<http://www.contec.com/download/>)





- Box-PCs
- Panel-PCs**
- Flat Panel Displays
- Silicon Disk Drives
- Option
- Box PCs & Panel PCs with Windows CE
- Single Board Computer
- Chassis / Backplane
- Analog I/O
- Digital I/O
- Counter & Motion Controller
- Serial Communication
- GPB Communication
- Remote I/O
- Expansion Unit / Bus Adapter
- Software
- Accessories & Cables
- Distributed Monitor & Control Network: F&EIT
- Multi-Programmable Display
- Wireless LAN
- Remote Monitoring Solution
- Service & Products

B-03

IPC-PT 630 Series

Fanless Ultra Low Voltage Pentium III 800MHz Panel PC 630 series

Dimensions on Page B-06

Low Voltage Pentium III 800MHZ	Chip Set 815E	Main Memory Max. 512MB SDRAM	Fan-less	 15inch TFT	 15inch TFT	 12.1inch TFT	 12.1inch TFT
	PCMCIA (CardBus)	DVI (Includes VGA adapter)	LAN	Audio	■ PC Card slot x1 IPC-PT/H630X(PCI)C	■ PC Card slot x1, PCI Bus slot x2 IPC-PT/H630X(PCI)CP	■ PC Card slot x1 IPC-PT/L630S(PCI)C

* Contec cannot guarantee that a 2.5" HDD will operate normally when used on a 24-hour basis. This type of use will drastically reduce the service life of the drive. Contec recommends the use of a silicon disk drive (SDD) when operating on a 24-hour basis.

User's manual shipped on CD.
Manuals can be downloaded from our website. (<http://www.contec.com/download/>)

Features of IPC-PT620, 630 series

- Equipped with Low Voltage Intel® Celeron® Processor 400MHz (FSB 100MHz) CPU and 256MB memory (IPC-PT620 series)
- Equipped with Low Voltage Intel® Pentium III Processor 800MHz (FSB 133MHz) CPU and 256MB memory (IPC-PT630 series)
- Natural air-cooled Fan-less system
- Reliable, virtually noiseless operation when used with CONTEC's PC-SDD V Series silicon disk drives (Silicon disks are ideal for use in harsh environments such as those experiencing extremes in temperature, humidity or vibration)
- Embedded CPUs and chipsets contribute to long-life availability
- CONTEC customized BIOS [Phoenix Technologies, Ltd.] provides BIOS level support
- Interfaces include PCMCIA (CardBus compliant), Audio (AC97 compliant), 100BASE-TX and RAS
- External secondary-IDE connector for optional CD-ROM
- CMOS data can be stored on EEPROM, providing system boot-up even if the battery is drained
- IP65-compliant dustproof / waterproof front panel

Box-PCs

Panel-PCs

Flat Panel Displays

Silicon Disk Drives

Option

Box PCs & Panel PCs with Windows CE

Single Board Computer

Chassis / Backplane

Analog I/O

Digital I/O

Counter & Motion Controller

Serial Communication

GPB Communication

Remote I/O

Expansion Unit / Bus Adapter

Software

Accessories & Cables

Distributed Monitor & Control Network: F&EIT

Multi-Programmable Display

Wireless LAN

Remote Monitoring Solution

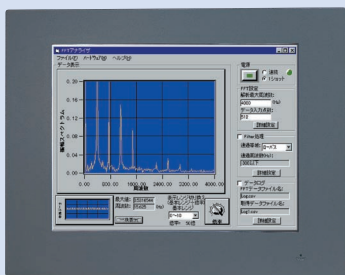
Service & Products

B-04

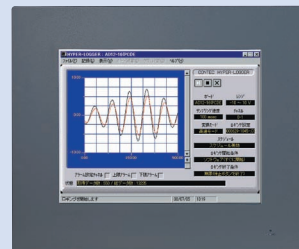
IPC-PT 620

IPC-PT 630

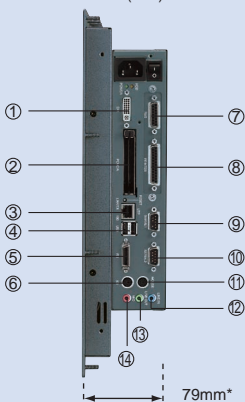
- IPC-PT/H620X(PCW)C
- IPC-PT/H620X(PCW)CP
- IPC-PT/H630X(PCI)C
- IPC-PT/H630X(PCI)CP



- IPC-PT/L620S(PCW)C
- IPC-PT/L620S(PCW)CP
- IPC-PT/L630S(PCI)C
- IPC-PT/L630S(PCI)CP

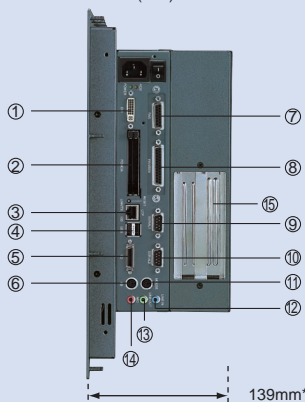


- IPC-PT/H620X(PCW)C
- IPC-PT/L620S(PCW)C
- IPC-PT/H630X(PCI)C
- IPC-PT/L630S(PCI)C



The interface configuration is the same on all models.

- IPC-PT/H620X(PCW)CP
- IPC-PT/L620S(PCW)CP
- IPC-PT/H630X(PCI)CP
- IPC-PT/L630S(PCI)CP



The interface configuration is the same on all models.

Comments of Interface

- ① DVI
- ② PC Card
- ③ 10BASE-T/100BASE-TX
- ④ USB 2ch
- ⑤ FD
- ⑥ Keyboard
- ⑦ RAS
- ⑧ Printer
- ⑨ COM 1
- ⑩ COM 2
- ⑪ Mouse
- ⑫ Line input
- ⑬ Line output
- ⑭ Mic
- ⑮ 620 series: PCI/ISA expansion slot
630 series: PCI expansion slot

*Mounting depth

Options

Name	Description
Memory (144-pin SO-DIMM)	
PC-MSD256-144V	256MB SD Memory
Floppy Disk Drive	
PC-FDD25BH	3.5-inch FDD drive (an attached cable)
Screen Protective Seal	
IPC-CV12	Protective seals for 12.1-inch display (10pcs)
IPC-CV15	Protective seals for 15-inch display (10pcs)
CD-ROM / DVD-ROM drive	
IPC-CDD-02	CD-ROM / DVD-ROM drive (an attached cable)
Others	
IPC-SLIB-01	Driver & Utility software (CD-ROM)

IPC-PT620 series

Name	Description
Memory (144-pin SO-DIMM)	
PC-MSD128-144H	128MB SD Memory
Others	
IPC-PT/x620x(PCW)-HME	English manual of IPC-PT/x620x(PCW)

IPC-PT630 series

Name	Description
Others	
IPC-PT/x630x(PCI)-HME	English manual of IPC-PT/x630x(PCI)

PANEL-PCs

■ Specifications

Model	IPC-PT/H620X(PCW)C IPC-PT/H620X(PCW)CP	IPC-PT/L620S(PCW)C IPC-PT/L620S(PCW)CP	IPC-PT/H630X(PCI)C IPC-PT/H630X(PCI)CP	IPC-PT/L630S(PCI)C IPC-PT/L630S(PCI)CP
Box-PCs				
Panel-PCs				
Flat Panel Displays	CPU Ultra Low Voltage Intel® Celeron® Processor 400MHz (FSB100MHz) Low Voltage Intel® Pentium® III 800MHz (FSB 133MHz)			
Silicon Disk Drives	Main Memory 256 MB standard *1 / Max. 512MB (3.3V 144-pin SO-DIMM PC100 Socket x2)			
Option	VGA Intel® 815E (controller built into)			
Box PCs & Panel PCs with Windows CE	Display			
Single Board Computer	LCD type			
Chassis / Backplane	Number of Colors			
Analog I/O	Touch Panel			
Digital I/O	Resolution			
Counter & Motion Controller	Detection Method			
Serial Communication	Backlight ON/OFF			
GPIO Communication	Membrane Switch			
Remote I/O	Interfaces			
Expansion Unit / Bus Adapter	CRT I/F			
Software	Keyboard I/F			
Accessories & Cables	Mouse I/F			
Distributed Monitor & Control Network: F&EIT	FDD I/F			
Multi-Programmable Display	IDE I/F			
Wireless LAN	Serial I/F			
Remote Monitoring Solution	Parallel I/F			
Service & Products	USB I/F			
	Ethernet			
	PC Card slot			
	General-purpose I/O			
	Audio			
	RAS function			
	Supported OS			
	Expansion Bus slot			
	Power Supply / Instantaneous Blackout			
	Dimensions (mm) (Exclusive of panel)			
	Weight			

*1: A 256 MB memory module is plugged in one socket.

*2: Using the DVI-analog RGB adapter (accessory bundled) allows an ordinary analog RGB input display to be connected to the IPC-PT/x630x(PCI). Note that Panel Link input displays cannot be connected.

*3: It cannot be used in the ISA bus slot that signals of -5V, IOCHK, REFRESH, MASTER. (PCI bus slot is 32-bit compliant)

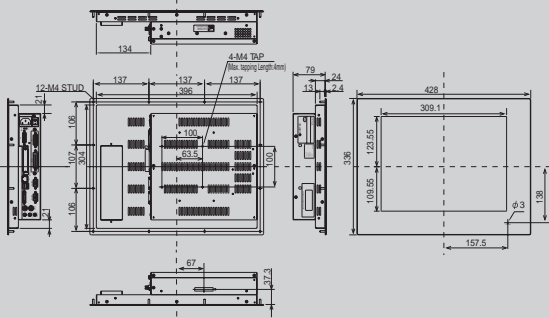
B-05

IPC-PT 620

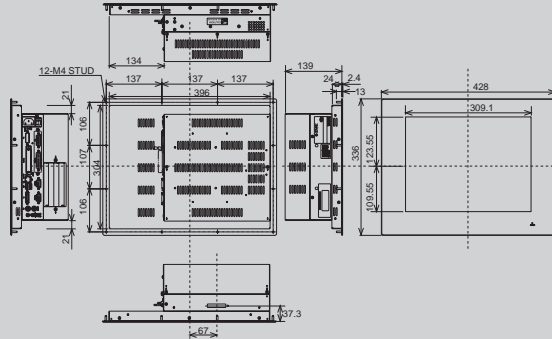
IPC-PT 630

Dimensions

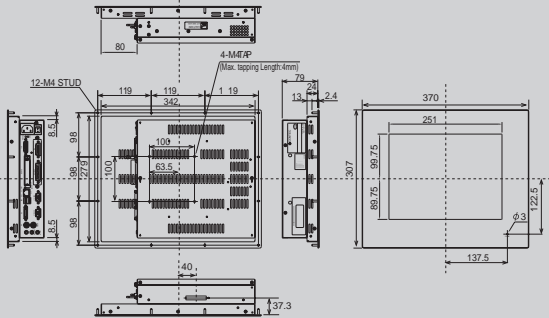
IPC-PT/H620X(PCW)C
IPC-PT/H630X(PCI)C



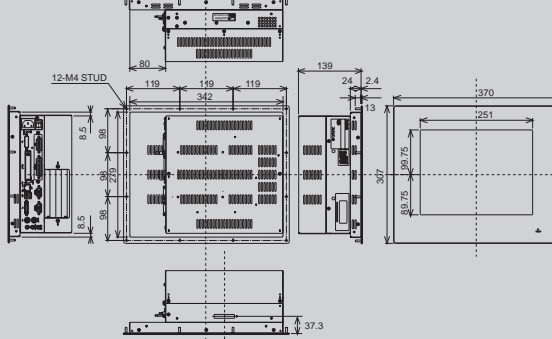
IPC-PT/H620X(PCW)CP
IPC-PT/H630X(PCI)CP



IPC-PT/L620S(PCW)C
IPC-PT/L630S(PCI)C



IPC-PT/L620S(PCW)CP
IPC-PT/L630S(PCI)CP



Box-PCs

Panel-PCs

Flat Panel Displays

Silicon Disk Drives

Option

Box PCs & Panel PCs with Windows CE

Single Board Computer

Chassis / Backplane

Analog I/O

Digital I/O

Counter & Motion Controller

Serial Communication

GPIO Communication

Remote I/O

Expansion Unit / Bus Adapter

Software

Accessories & Cables

Distributed Monitor & Control Network: F&EIT

Multi-Programmable Display

Wireless LAN

Remote Monitoring Solution

Service & Products

B-06

IPC-PT 620

IPC-PT 630

Unit: (mm)